







A CHOICE OF HAPPINESS AND SIMPLICITY
THE SQUARE



LOCATION

- 20 min to Dubai International Airport
- 25 min to Al Maktoum International Airport-DWC
- 12 min to Mall of the Emirates
- 20 min to Downtown Dubai
- 12 min to EXPO 2020
- 20 min to The Palm Jumeira
- 10 min to JBR
- 15 min to Dubai Miracle Garden
- 20 min to IMG World
- 20 min to Global Village
- 10 min to Sport City
- 15 min to Motor City

Hessa Street

Park

The O2 Tower

The Square Tower

Sheikh Mohammed Bin Zayed Rd

Al Khail Rd

HOME IS
WHERE
THE **STORY**
BEGINS





FURNISHED APARTMENTS

- Studios as well as one bedroom apartments
- Two swimming pools
- Gymnasium
- Kids area
- Ample parking space
- Elegant lobby with reception desk
- 24/7 security



WELL ESTABLISHED APARTMENT WITH
INSPIRING DESIGN





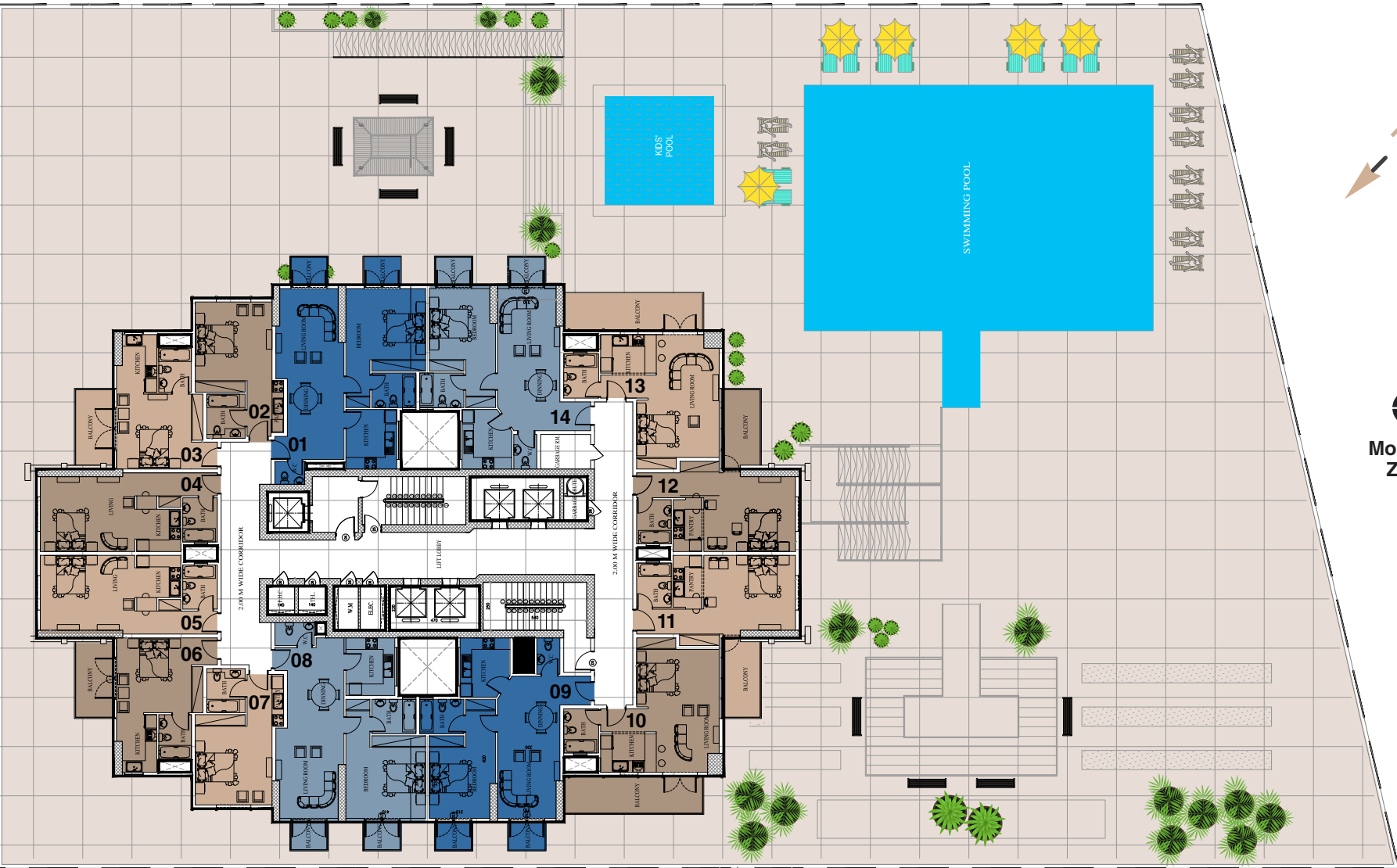
37 STORIES

- 2 Basement floor
vors
- 1st Floor offices, health club,
pool and terrace
- 2nd 3rd Floor offices
- 4th - 37th Furnished apartments



TYPICAL FLOOR PLAN

4th - 16th / 18th - 23rd FLOOR PLAN



- Studio
- Studio
- 1 Bedroom
- 1 Bedroom



Main Entrance

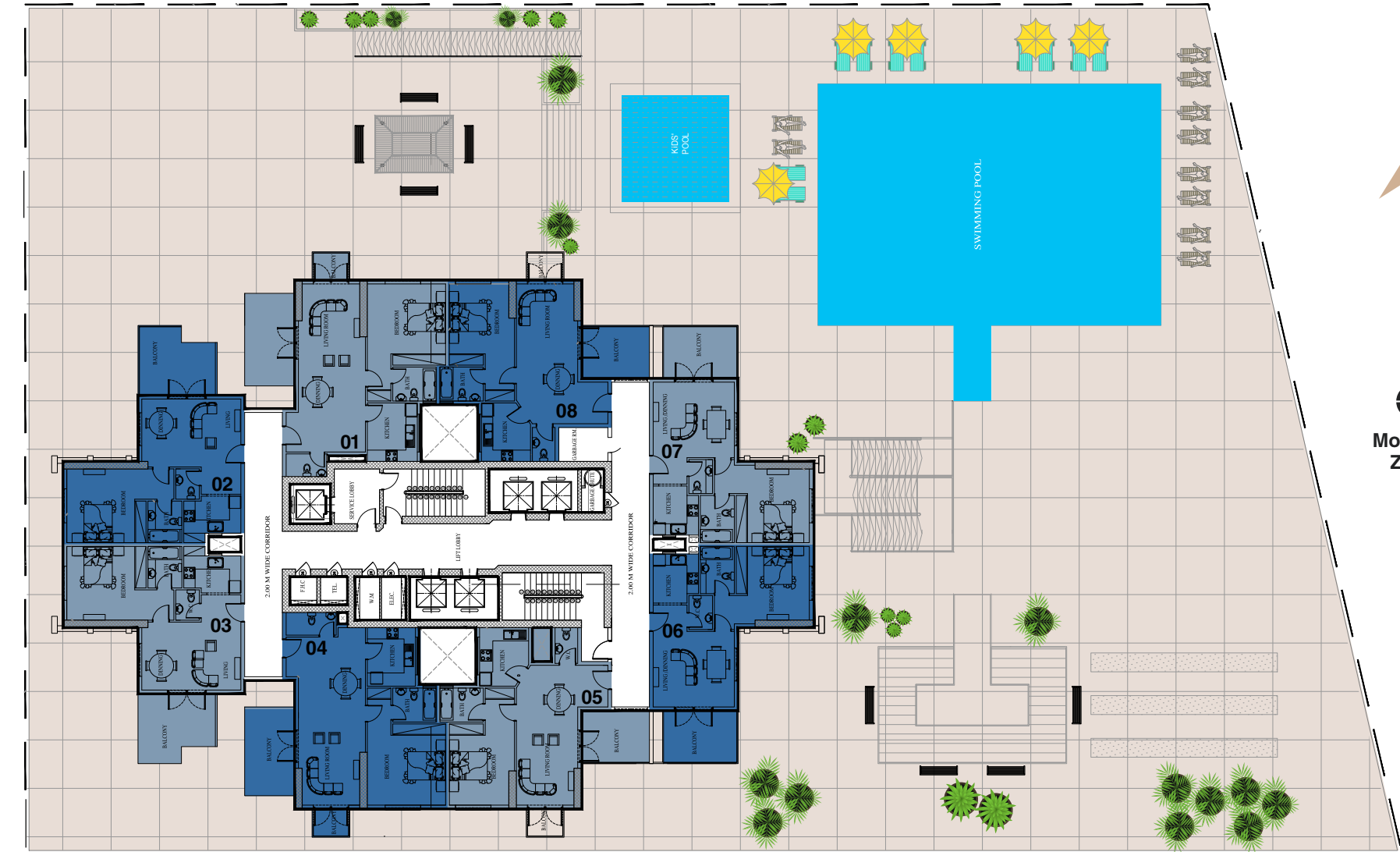


AIKhail Road

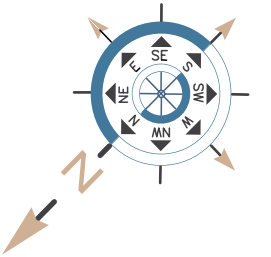


TYPICAL FLOOR PLAN

24th - 25th FLOOR PLAN



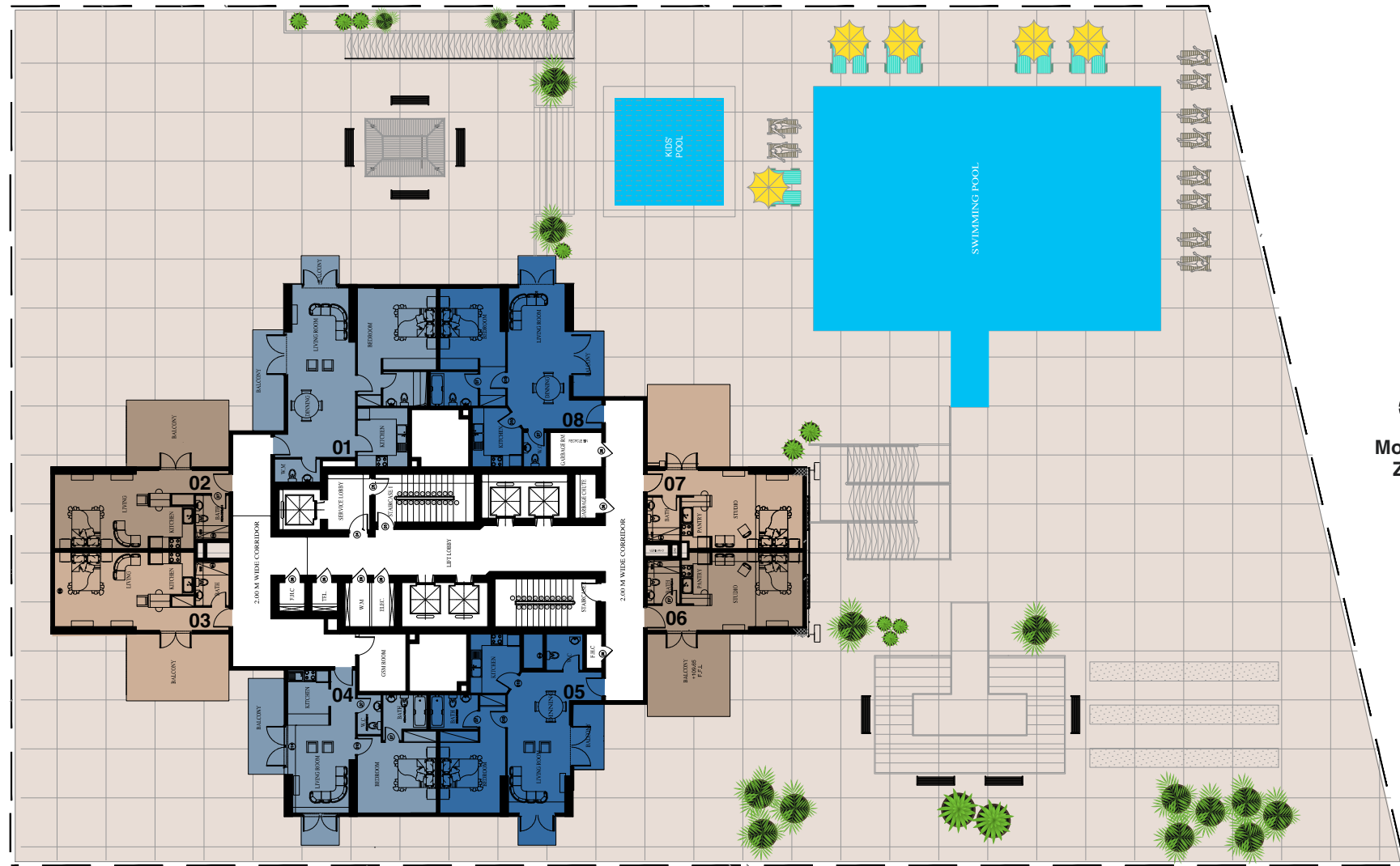
- 1 Bedroom
- 1 Bedroom





TYPICAL FLOOR PLAN

26th FLOOR PLAN



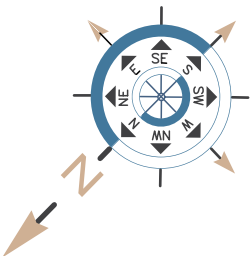
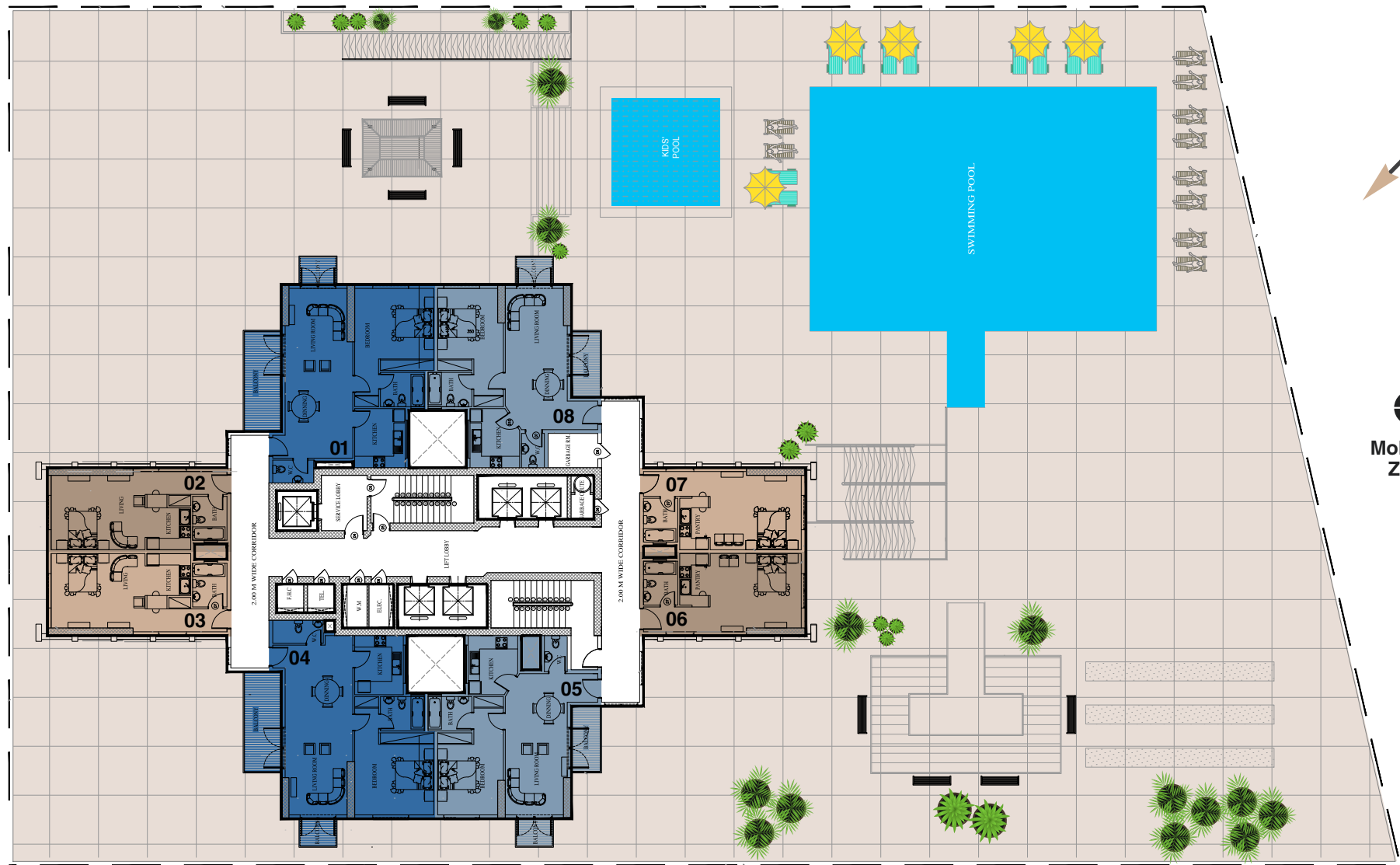
- Studio
- Studio
- 1 Bedroom
- 1 Bedroom





TYPICAL FLOOR PLAN

27th - 32nd FLOOR PLAN



Mohammed Bin
Zayed Road

- Studio
- Studio
- 1 Bedroom
- 1 Bedroom



Main Entrance

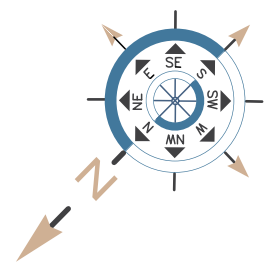
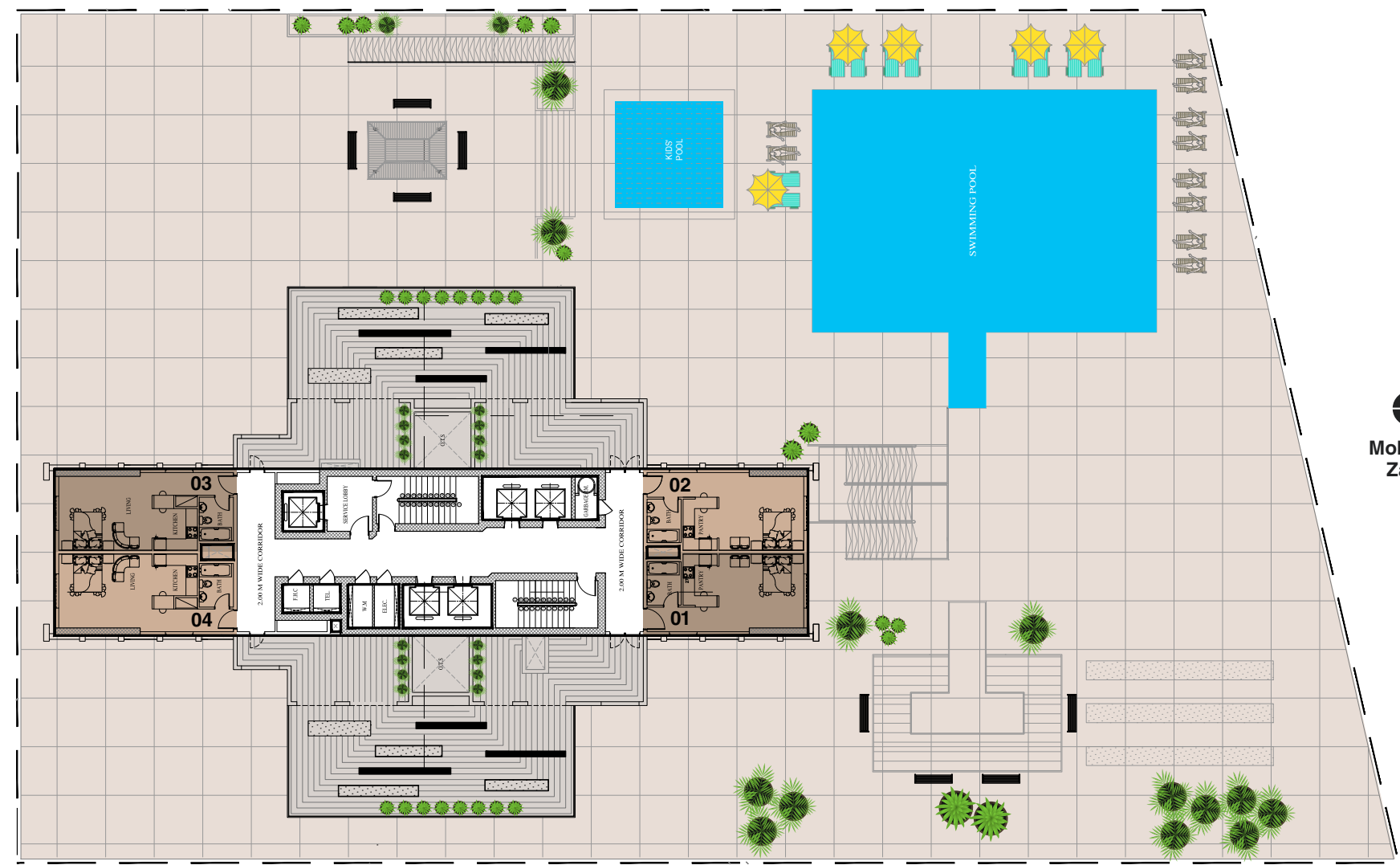


AlKhail Road



TYPICAL FLOOR PLAN

33rd FLOOR PLAN



Mohammed Bin Zayed Road

Studio
Studio



Main Entrance

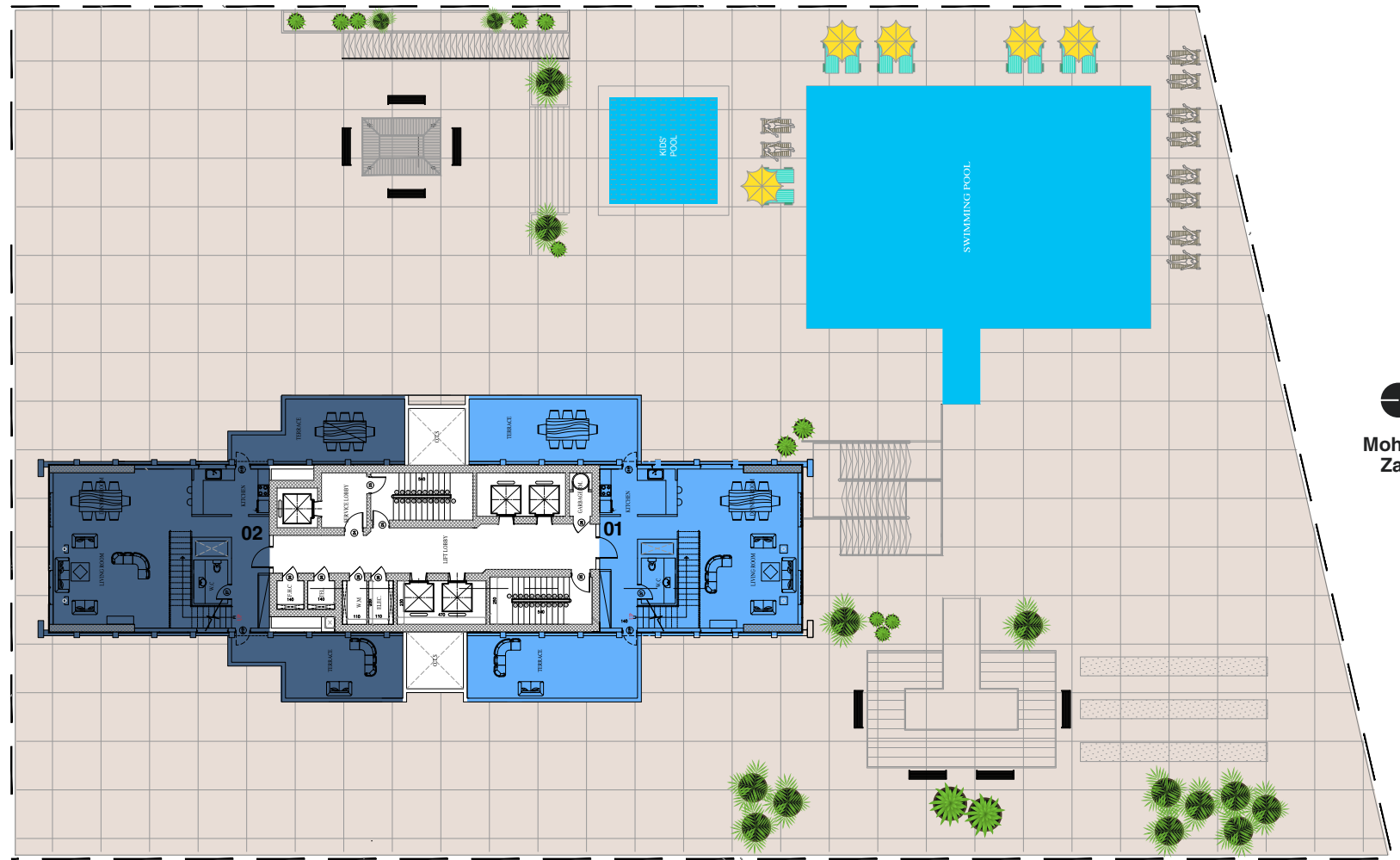


AIKhail Road



TYPICAL FLOOR PLAN

34th - 37th FLOOR PLAN

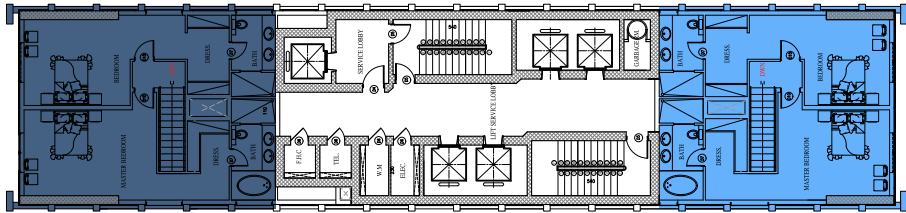


Duplex

Studio

Main Entrance

AlKhail Road



35th - 37th
FLOOR PLAN
HIGHER DUPLEX

GET FIT, FEEL FABULOUS, GET MOTIVATED,
AND INCREASE YOUR OVERALL FITNESS



FOR YOUR HEALTH

Energise yourself with a challenging work-out at the health club, with all of the latest premium fitness equipment. Then enhance your wellbeing with a session of relaxation in the plush steam rooms and sauna.

CHILLOUT

Go for a swim and enjoy a little downtime in the calming waters – there's no better way to let go of everyday stress. Two swimming pools for adult and for kids. The swimming pools are big enough to get a serious swimming. Pool's size (18,20X12,80 meter)





1. All room dimensions are measured to structural elements and exclude wall finishes and construction tolerances / 2. All dimensions have been provided by our consultant architects. / 3. All materials, dimensions & drawing are approximate. Information is subject to change without notice. / 4. Actual suite area may vary from the stated area. Drawings not to scale. The developers reserve the right to make revisions. / 5. Calculation of suite area is measured as the area bounded by the centre line of demising or partition walls separating one unit from another unit, the exterior face of all exterior walls, and the exterior face of the corridor wall enclosing the joining unit. / 6. Calculation of balcony area is measured as the area bounded by the centre line of demising or partition walls separating one unit from another unit, the outmost face of the enclosing guard and the external face of the unit adjoining the balcony. / 7. The units are measured at typical floor in the building. Columns may vary in size depending on the floor level. Interior furnishing, Kitchen appliances and bath fixtures are indicative and large net area of studio may vary

Dubai:

Deira, Samaya Hotel

Sharjah:

Taawun Towers 2

Tel: +971 - 800 300 300

contact@tigergroup.ae | www.tigerproperties.ae



@tigergroupglobal



tigergroupglobal



Tiger Group Global

